

# SOLTAIRE 180

## TOP HUNG STRAIGHT SLIDING DOOR SYSTEM FOR DOORS UP TO 180kg EACH

### APPLICATIONS

- ▶ Manufactured from high grade 316 stainless steel within anodised aluminium track.
- ▶ This reliable system is extremely durable and ideal for coastal applications or heavy use.
- ▶ Ideal for areas requiring a high level of corrosion resistance.
- ▶ Designed for interior and exterior doors up to 180 kg.
- ▶ Ideal for residential or commercial applications.
- ▶ Designed to accommodate multiple doors which can slide to either side or both sides.
- ▶ Hangers available for timber or metal doors.
- ▶ The track can be soffit fixed or face fixed to give flexibility of installation.

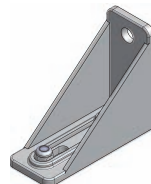
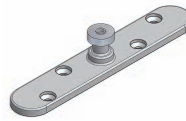
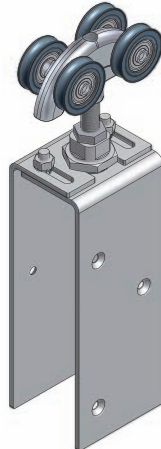
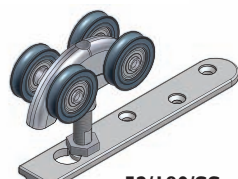
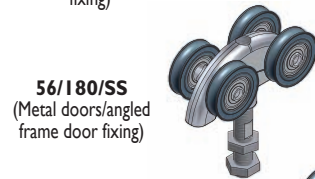
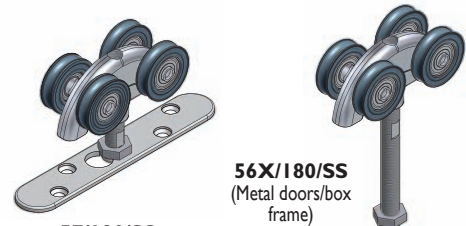
### DOOR SPECIFICATION

Max panel weight	180 kg
Max panel thickness	48mm
Min panel thickness	35mm
Max panel height	3000mm

### GEAR SPECIFICATION

<b>Track</b>	Anodised aluminium (25 microns) available in lengths <i>Soffit fix spacing 900mm centres (maximum)</i>	180/2000A, 180/2500A, 180/3000A, 180/4000A, 180/5000A & 180/6000A
<b>Brush strips</b>	Available in black in 4 brush heights, by the metre	BS10, BS15, BS20, BS25(mm)
<b>Brackets</b>	Face fixed stainless steel Double face fixed stainless steel bracket (heavy) <i>Starting 20mm from end of track fix at 900mm centres (maximum)</i>	1/SS 5H/SS
<b>Hangers</b>	2 required per door Timber doors - corner plate fixing - saddle plate fixing - (concealed) plate fixing Metal doors - angled frame door fixing - box frame fixing - (concealed) plate fixing	52/180/SS 53/180/SS 57/180/SS 56/180/SS 56X/180/SS 57/180/SS
<b>Guides</b>	Timber doors - (concealed) fixing with SS bearing - wall mounted guide - for multiple runs of doors use Metal doors - box section metal door - long - box section metal door	106H SS/94 102 SS/94 102 SS/94 104PX/89 104P/89
<b>Channels</b>	Aluminium (2000, 2500, 3000 & 6000mm) Stainless steel (3000mm length only) Brass (1500mm and 3000mm length only) Galvanised steel (1800, 2000, 2500 & 3000mm) Polypropylene channel Aluminium supporting channel for polypropylene	94X 89SS 94 89 94P 94SC

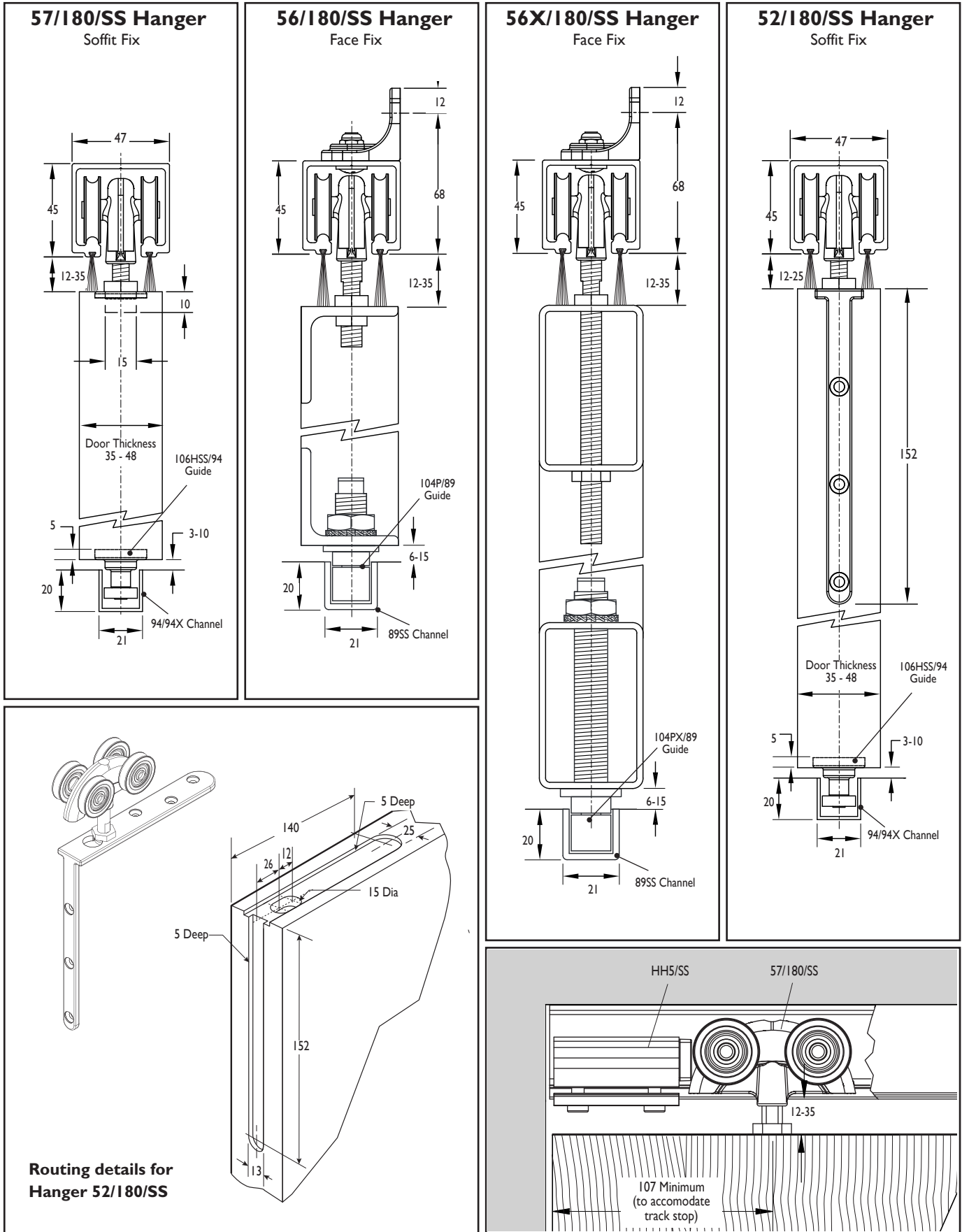
**Track Stop** HH5/SS



HIDDEN DOORS



# SOLTAIRE 180



(All dimensions are in mm.)

**HENDERSON**

P C Henderson Limited, Durham Road, Bowburn, County Durham DH6 5NG, UK. Web: [www.pchenderson.com](http://www.pchenderson.com)  
 Customer Services Department: Tel: +44 (0)191 377 7345 Fax: +44 (0)191 377 3116 Email: [sales@pchenderson.com](mailto:sales@pchenderson.com)  
 Export Department: Tel: +44 (0)191 377 7346 Fax: +44 (0)191 377 0755 Email: [international@pchenderson.com](mailto:international@pchenderson.com)

